

GLAMOR

USER-FRIENDLY, COMPACT,
QUIET AND VERSATILE

450VA – 2000VA

GLAMOR is a plug & play line-interactive UPS with a compact footprint and low power consumption, and is quiet and easy to use: ideal for the home or office.



IDEAL FOR



Gaming and TV



PC and peripherals



Small offices



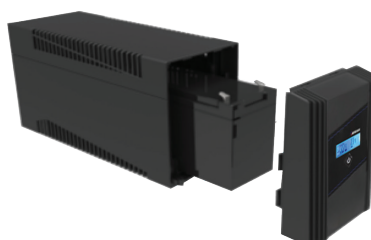
Small businesses

FEATURES

- Line-interactive UPS with pseudo-sine wave output to provide power to all electronic entertainment devices (e.g. gaming, TV, Hi-Fi, satellite receivers), PCs and peripherals in the event of blackouts or power problems.
- Connected devices are always available because they can be powered up when there is no mains power.
- Automatic restart after prolonged blackouts means that it is always ready to protect your loads.
- The built-in automatic voltage regulator (AVR) stabilises the power when there are mains faults (e.g. spikes, sags, over- and under-voltages etc.), providing high levels of power protection and quality.
- Free downloadable software for monitoring events and shutting down the connected PC in complete safety to protect data and hardware.
- The backlit LCD display makes it easy to read the UPS status, so all parameters can be kept under control.
- Easy battery replacement.
- The plug-in feature ensures that the battery is always charged: the UPS charges the battery even when it is switched off.
- The advanced management system and the wide input voltage and frequency range extends battery life.
- The built-in USB communication port makes it easy to connect to the PC.
- Supplied with input and output power cables.
- 2-year warranty.

EASY BATTERY REPLACEMENT

GR 450-650-850



GR 1000-1500-2000

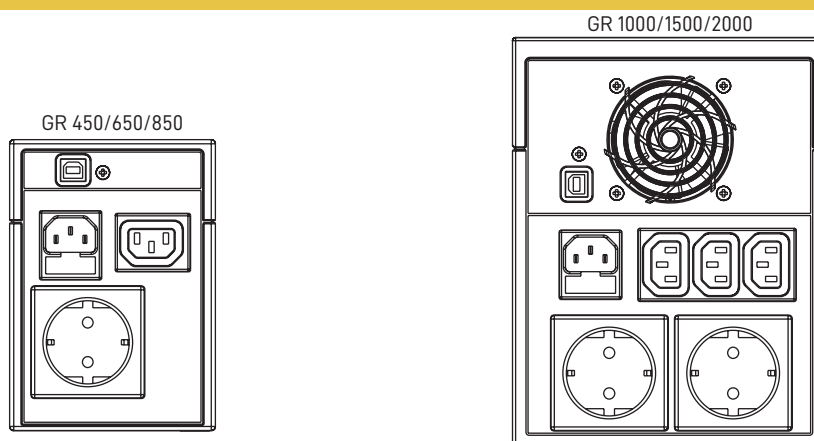


GLAMOR TECHNICAL DATA SHEET

MODEL		GR450 LCD	GR650 LCD	GR850 LCD	GR1000 LCD	GR1500 LCD	GR2000 LCD	
POWER	VA	450	650	850	1000	1500	2000	
	W	250	360	500	600	900	1200	
INPUT	Rated voltage	160 – 290 Vac						
	Frequency	45 – 65 Hz						
OUTPUT	Rated voltage	220/230/240 Vac ± 10%						
	Frequency on battery power	50/60 Hz ±1 Hz						
	Waveform	Simulated sine wave						
	Output sockets	1 IEC 320-C13 + 1 Schuko			3 IEC 320-C13 + 2 Schuko			
GENERAL	Dimensions (WxDxH) mm	100x292x140	100x292x140	100x292x140	148x315x198	148x315x198	148x315x198	
	Weight (kg)	4	5	5.5	9	10.5	11.8	
	Alarms	Audible and visual alarm alerts for: power failure, low battery, overload, and UPS fault						
	Protection	Overload, short circuit, deep discharge, overcharging						
	Plug-in battery charging feature	Standard for all models						
	Cold start from the battery without mains power	Standard for all models						
BATTERY	Battery type	12V VRLA, AGM (maintenance-free lead)						
	Uptime with internal battery (in minutes)*	50% load	4	2m 20s	4	12	9	7
		75% load	1	1	1	6	5	4
ENVIRONMENTAL PARAMETERS	Operating temperature**	0–40°C						
	Relative humidity	0%–90% (non-condensing)						
	Altitude (a.s.l.)	<1000 m with no power derating, >1000 m with 1% derating for every 100 m.						
	Audible noise at 1 m.	≤40 dB						
CONNECTIVITY	Communication ports	USB						
	User interface	LCD display showing: Operating mode (AC Mode/AVR Mode/Battery Mode), battery charge level, input and output voltage, load percentage, fault, or battery weak						
	Compatible software platforms	Microsoft Windows, Linux, Mac						
REGULATIONS	Standards	IEC EN 62040-1, IEC EN 62040-2, IEC EN 62040-3						
	Marking	CE						

Data may be subject to change without notice due to our commitment to continuous innovation - rev 22_06

BACK PANEL



* Subject to conditions

** To be verified according to the battery parameters